

Making Kent a better place to live, work and visit

Countryside Access Service



Environment
and Waste





Environment
and Waste





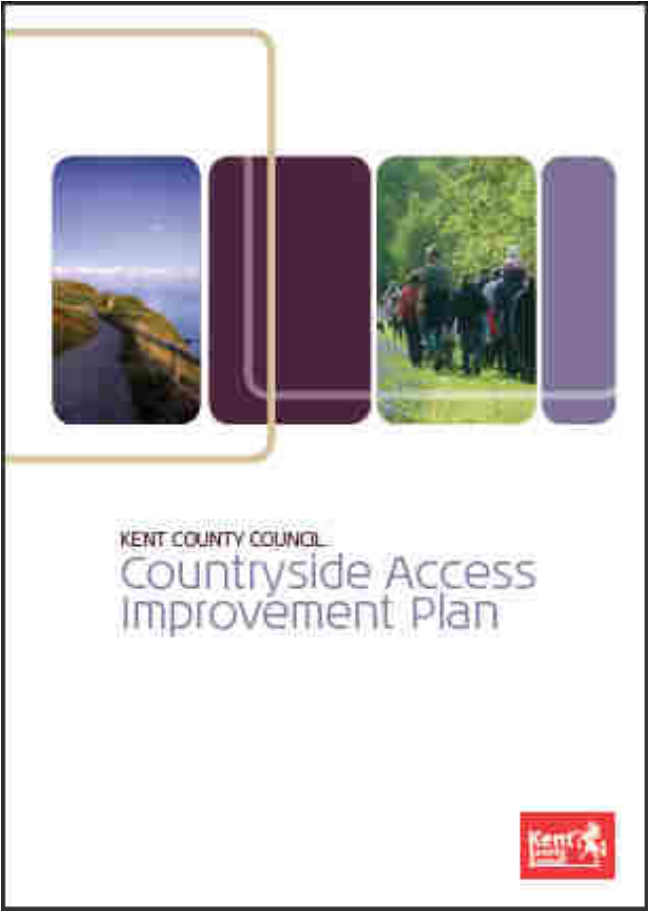
Environment
and Waste





Environment
and Waste





Environment
and Waste





Environment
and Waste





Environment
and Waste



Making Kent a better place to live, work and visit

Graham Rusling

graham.rusling@kent.gov.uk

01622 696995



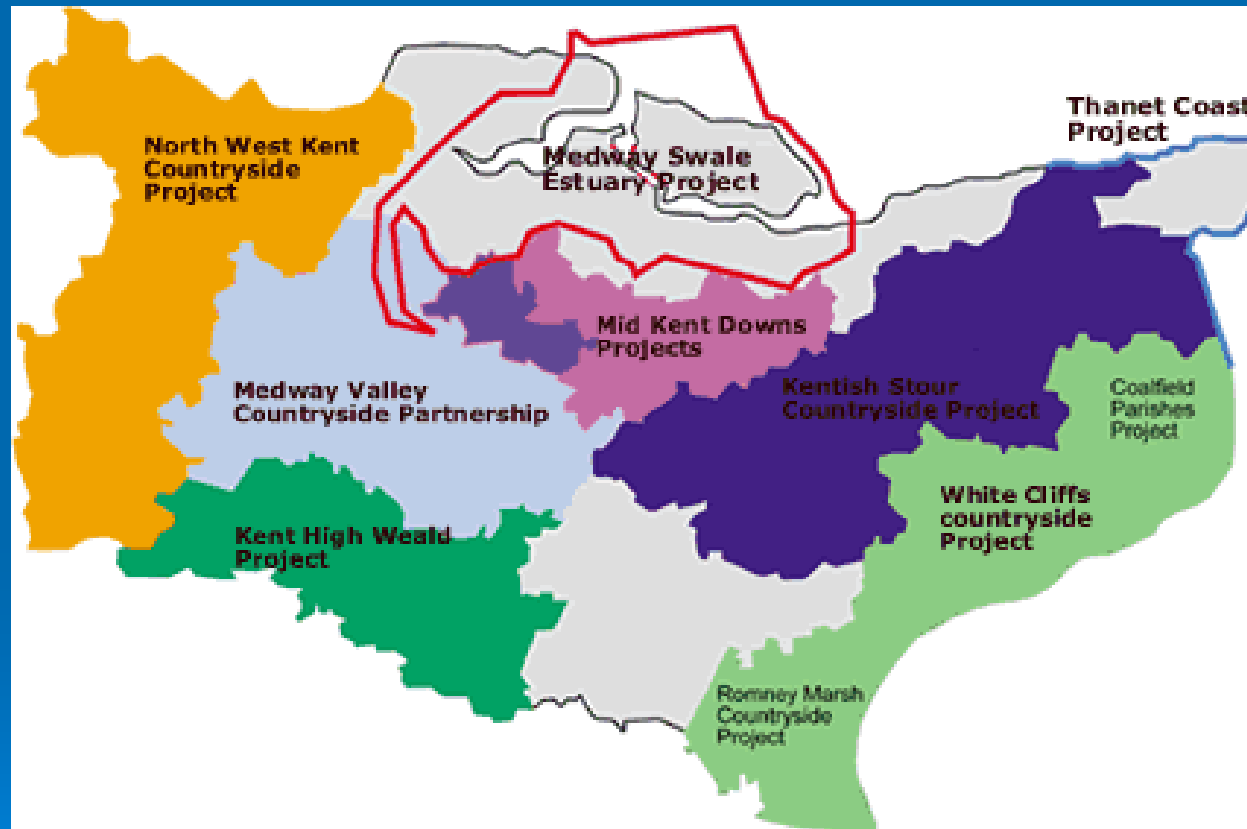
Environment
and Waste



Medway Valley Countryside Partnership



Countryside Management Partnerships in Kent



About us

- Provide advice, events, education and practical support to local communities to conserve wildlife and the Kentish landscape
- Work with Borough Councils, Parish Councils, PROW to improve access and recreation along the Medway Valley Walk and throughout our area
- Work in partnership with KWT, Natural England & landowners for the management of special habitats and protected species
- Our 21st anniversary year



Medway Valley Walk



- 45km from Tonbridge to Rochester
- 2004/2005 survey highlighted work required
- Bank restoration
- Recreation and access
- Public engagement
- Wildlife



Major bank re-instatement 70+ access improvements from 2005/7



River Communities Project

- Dedicated officer to deliver the project
- Events programme
- School workshops focussing on river heritage
- Circular walks creation and interpretation
- Memories project - a means of information sharing through interpretation and website development
- Development of new contacts for the Partnership and networking with local groups

River Warden Scheme

- 33 Wardens working on the Medway between Tonbridge and Maidstone
- 14 new (2009) River Wardens working in the Medway Gap
- Spring Clean ups and River Rubbish Round Ups



River Wildlife & beyond

- Water voles
- Barn owls
- Invasive species control
- Flora and fauna of all sizes



What's next

- Work continues
 - Closer ties with Hadlow College
 - More schools work & wildlife gardens
- 
- Development of new contacts for the partnership - networking with local groups into Europe and beyond!



Valley of Visions

Landscape Partnership Scheme

Riverside Cycling in the Medway Gap

Rick Bayne – Project Manager

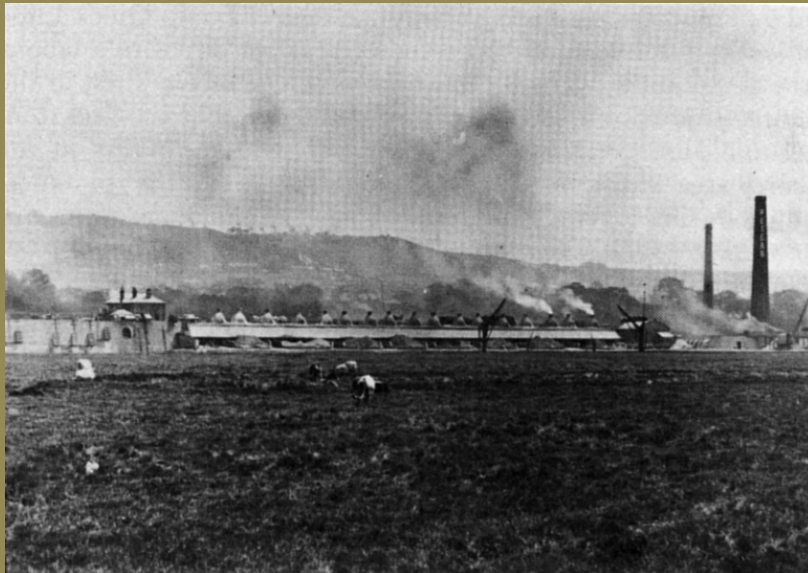


Supported by
The National Lottery[®]
through the Heritage Lottery Fund



Valley of Visions Scheme and its legacy

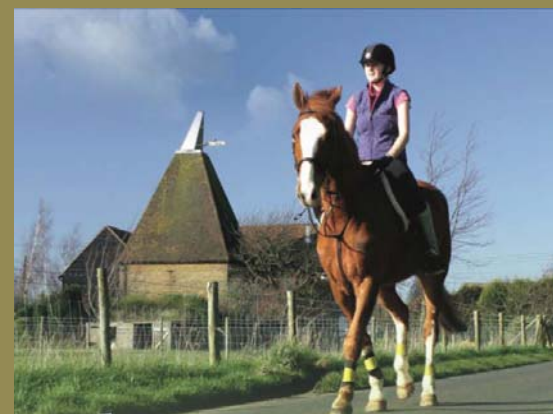
“A complex programme designed to conserve and enhance the Medway Gap’s heritage landscapes and biodiversity; to improve physical and intellectual access to them; and to engage local landowners, communities and visitors sustainably in their exploration, interpretation and long-term care.”

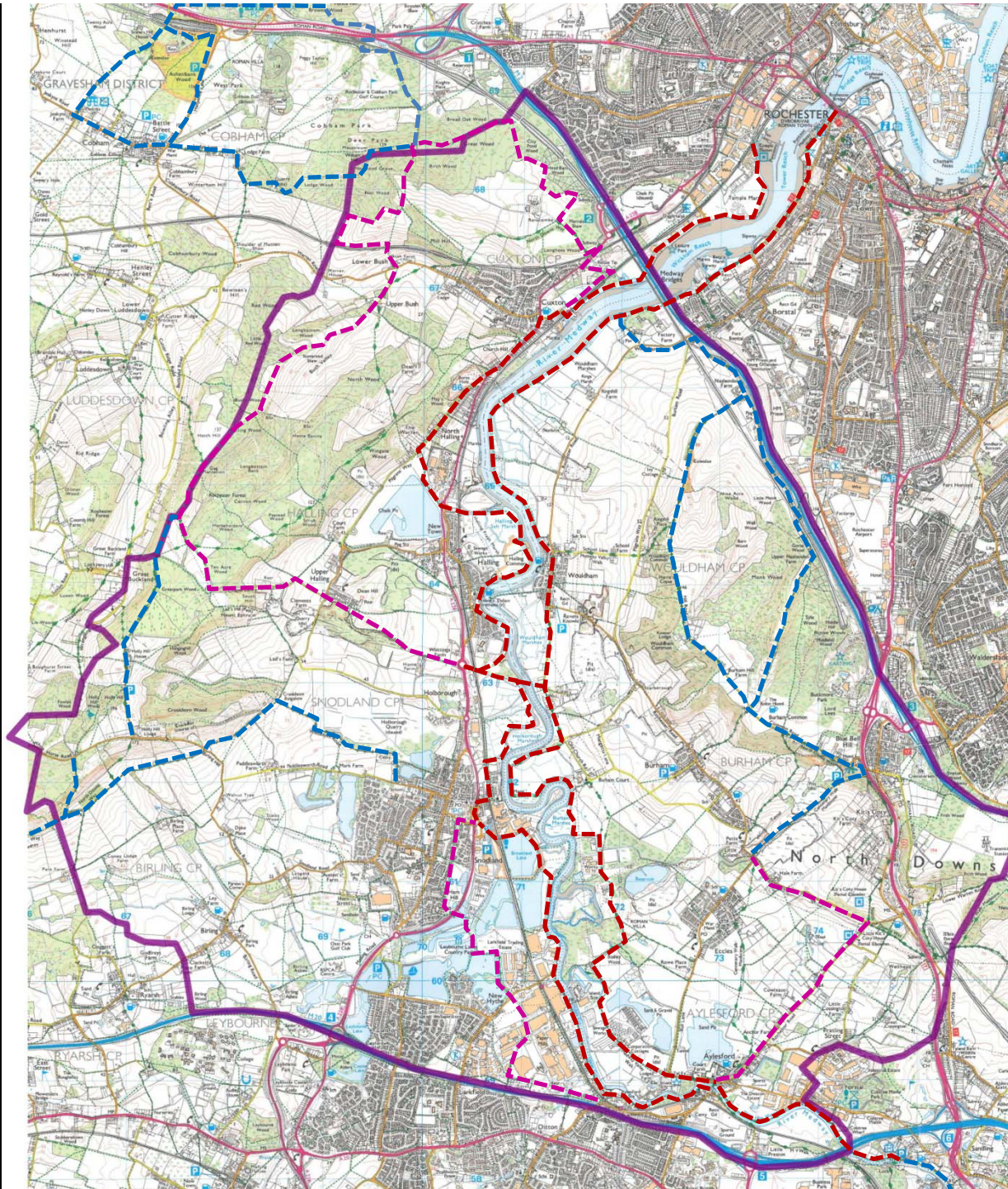


Delivering Countryside Links

Improving access to the countryside, including:

- Extensive pedestrian access along the east and west banks of the Medway linked into the existing rights of way network; together with the potential to create enhanced and safer access along the Pilgrim's Way.
- Safer access for horse riders in the Eccles area on the east bank... together with the potential to deliver an extensive new west bank bridleway route on the North Downs Way – all linked into the existing bridleways around Snodland and the developing network around Shorne and Cobham to the north.





Taking advantage of opportunities

- Long-held aspiration of Sustrans and TMBC to reroute National Cycle Route 17.
- Riverside route provides level gradient and mostly traffic-free path.
- Takes advantage of capacity that exists within Valley of Visions and momentum that has built behind its work.
- Funding opportunity has arisen through 'Greening the Gateway Kent & Medway' to undertake development work to provide justification for the provision and produce a project plan for delivery.
- Opportunity to also examine the potential for west bank cycling provision.
- Links into projects already being undertaken by Valley of Visions and others:

Aylesford to Allington Lock

- Receiving support from partners including TMBC, Environment Agency, Medway Council, KCC, Sustrans, Medway Ports.

Aims of the study

- Determine demand for linking riverside routes
- Undertake analysis of fit with existing strategies.
- Identification of routes and works required to achieve links.
- Provision of detailed specifications for works required to deliver on preferred routes.
- Provide detailed costings.
- Identification of potential funding sources.
- Implementation will not be possible within the existing lifetime of Valley of Visions, but will provide the justification and information to take the project forward





Rick Bayne – Project Manager
rick.bayne@vov.kentdowns.org.uk

01634 242826

www.valleyofvisions.org.uk



Supported by
The National Lottery[®]
through the Heritage Lottery Fund



KCC Update for TMBC Parish Partnership Panel 10-09-09

Prepared By: Loic Flory, KCC Community Liaison Manager, Tonbridge and Malling and Maidstone, Room 1.97, Sessions House, Maidstone, Kent, ME14 1XQ
Phone (01622) 694217 Mobile 07710 339 889

Kent Carers Strategy launched: Based on the key aims of the National Carers Strategy, the document explains how carers can get support from KCC and its partners and what that support is. The strategy's main objectives are improving information advice and guidance, access to integrated and personalised services, carers having a life of their own, carers not being forced into financial hardship and helping carers to stay mentally and physically well. Copy available by contacting Naomi.hill@kent.gov.uk or call 01622 696611

New training and development website for Kent and Medway: I-share is a new website advertising hundreds of training and development courses being offered across councils in Kent and Medway. It is a joint collaboration between the 14 councils, boroughs and districts across Kent, funded by Improvement and Efficiency South East (IESE). On it you can search for training courses, book courses online, create personal profile pages, post questions about courses and career development and receive answers back from other users. Future developments include secondment and mentoring opportunities, and the eventual roll out to include Fire and Rescue, Police and Health services. Website: <http://www.i-share.org.uk/>

Scam warning to Kent residents: Kent Trading Standards is warning people of a phone scam where consumers receive a telephone call from a person pretending to work for either Kent County Council or the local borough council. They are told they have either paid too much council tax and they are entitled to a rebate or that they have not paid enough and need to pay more or they will be fined. The caller then asks for bank details. People are advised to not give out any personal information and report it to Consumer Direct who work alongside Kent County Council's Trading Standards officers by contacting them on 08454 040506 and to use the Consumer Direct website <http://www.consumerdirect.gov.uk/> for practical advice and support.

Stay safe and secure with the HandyVan service: Funded by the KCC Community Safety Unit and managed by Help the Aged/Age Concern, there are five HandyVans working across the county to provide advice and guidance and fit a range of safety and security products for people over the age of 60. Some of the products currently installed include smoke alarms, window locks, door chains, door viewers, mortice locks and mortice bolts. The free service is available to anyone aged 60 years or over, has disposable savings/assets not exceeding £20,000 (not including the value of their home) and lives in an area where HandyVans operate. To make a referral phone 0845 026 1055, email handyvan@helptheaged.org.uk or contact the KCC Community Safety Unit on communitysafetyunit@kent.gov.uk or telephone: 01622 221106 for more information.

New Kent Contact and Assessment Service: In July the Social Services County Duty Service (CDS) became the new Kent Contact and Assessment Service (KCAS). The public will now be able to access county-wide enablement

services for adults through KCAS. CDS currently works with around 100 Teams and Services across KASS, CSS and other directorates and has a relationship with a significant number of partner and other external agencies. KCAS will participate in a number of public involvement events throughout the summer and autumn to publicise this. More details: <http://knet2/directorates/adult-services/teams-and-units/operations-west-kent/kent-contact-assessment-service>

Kent Agreement Annual Performance Report

The KA2 Annual Performance Report has been published and summarised progress as 11 items green (on or ahead of target), 8 amber (good progress being made), 3 red (result significantly off target trajectory) and 16 where an assessment was not yet made. The three KA2 indicators flagged as 'red' are: NI 39 Rate of hospital admissions per 100,000 for alcohol related harm; NI 152 Working Age Population on out of work benefits; NI 154 Net additional homes provided. The importance of being clear about the contribution local LSPs can make to countywide targets was emphasised with the following recommendation approved: 'Request local LSP targets are agreed between countywide lead officers and local LSPs (section 5.3)'.

The full report is available at:

<http://www.kentpartnership.org.uk/documents/Kent%20Agreement%20%2008-09%20Performance%20Report.doc>

CFE (Children, Families and Education) Restructuring

In common with many other public sector organisations, KCC is facing a period of substantial change, coupled with the additional pressure of reduced public spending over the next few years. We need to consider with our partners how our joint resources, including staffing, are best deployed. This process of change is likely to be implemented over the next one to two years, in order to deliver organisational transformation. During August, the Senior Management Team and other senior managers will be working on the future structures in more detail.

CFE Financial Planning 2010/13

Work has already started on £3.5m structural savings needed by April 2010, outlined in the Medium Term Plan (MTP - KCC's financial plan for the next three years). CFE financial planning will run in conjunction with plans for the CFE restructure as approved by KCC in June. Plans will focus on a slim strategic centre, improved front-line service delivery and increased efficiency. A review of the current Kent Children's Trust governance and commissioning arrangements will be undertaken starting in September, and although the focus of this will be on the Kent Children's Trust Board, its Executive and substructure, it will also help to inform local planning and delivery arrangements and the shape of the central strategic commissioning teams. There will be a final report to the Kent Children's Trust Board in December and work from this review will be integrated into the planning for the CFE reorganisation.

Going Green

KCC has now achieved the international standard ISO 14001. This certification is given to organisations and businesses who can demonstrate work towards reducing their environmental impact.

Probity in Planning

Parish Partnership Panel

10 September 2009

INTRODUCTION

- Code of Conduct
- Personal & Prejudicial Interests
- Specifically “close associate”
- Predisposition -v- Predetermination
- Recent case law

Code of Conduct

- Interests are governed by the Code of Conduct
- An interest is either personal or personal and prejudicial
- Responsibility for determining & declaring interests rests with the individual Member
- The test of prejudice is whether a member of the public might reasonably perceive that a Member's judgement of the public interest could be affected

Close Associate

“A person with whom you have a close association is someone that you are in either regular or irregular contact with over a period of time who is more than an acquaintance. It is someone a reasonable member of the public might think you would be prepared to favour or disadvantage when discussing a matter that affects them. It may be a friend, a colleague, a business associate or someone whom you know through general social contacts.”

Predisposition or Predetermination?

- Keep an open mind
- Discuss the issues
- Consider the alternatives
- Make decisions based on planning merits

Persimmon Homes Teesside Limited –v- R (Lewis)

- Committee Members must not have a closed mind
- Elected Members are entitled and expected to have expressed views on planning issues
- They are not expected to cast aside views on policy formed when seeking election
- Should be open to new argument up to moment of decision



Kent Police

Parish Partnership Panel
District Commander Dave Pate

10 Sept 2009

Tonight's presentation

Personnel update

Performance update

Any questions



**Kent
Police**

Tonbridge and Malling **police** personnel update

New Deputy District Commander, Inspector Adrian Allen



01732 379235 or email adrian.allen@kent.pnn.police.uk

Tonbridge and Malling **police** personnel update

New supervisor for Malling area, Sergeant Mary Penfold



01732 529910 or email mary.penfold@kent.pnn.police.uk

Neighbourhood task team

New supervisor for the new Neighbourhood Task Team,
Sergeant Paul Stoner



**Kent
Police**

Tonbridge & Malling performance

Crime - July 09

Tonbridge and Malling

Target	Apr-Jul 07	Apr-Jul 08	Apr-Jul 09	% Diff.	Number Difference	Crime Per 1000 Pop	County Position	MSG Position	MSG Direction*
All Crime	2699	2197	1904	-13.3%	-293	16.46	2	2	▲ 5
Burglary Dwelling	110	101	68	-32.7%	-33	0.59	2	2	▲ 3
Burglary Other	213	157	142	-9.6%	-15	1.23	3	4	▲ 2
Robbery	15	9	4	-55.6%	-5	0.03	1	1	▲ 7
Violence Against the Person	496	368	371	0.8%	3	3.21	3	5	—
Sexual Offences	34	27	13	-51.9%	-14	0.11	1	1	▲ 14
CSA Violent Crime	545	404	388	-4.0%	-16	3.35	2	3	▲ 4
Serious Knife Crime	6	9	3	-66.7%	-6	0.03	2		
Serious Gun Crime	1	4	3	-25.0%	-1	0.03	9		
KA2 Serious Violent Crime	u/a	12	11	-8.3%	-1	0.10	2	4	▲ 6
Assault with Less Serious Injury	u/a	167	169	1.2%	2	1.46	2	7	▼ 2
TFMV	224	191	156	-18.3%	-35	1.35	5	7	▼ 3
TOMV	105	71	41	-42.3%	-30	0.35	1	1	▲ 12
Vehicle Crime	329	262	197	-24.8%	-65	1.70	4	4	▲ 4
CSA Criminal Damage	580	433	411	-5.1%	-22	3.55	3	2	▲ 5
Serious Acquisitive Crime	454	372	269	-27.7%	-103	2.33	1	2	▲ 3
Theft and Handling Stolen Goods	672	532	525	-1.3%	-7	4.54	2	3	▲ 7
KA2 Domestic Abuse: % of Repeat Victims	u/a	31.3%	27.4%		-3.9	n/a	5		
Deliberate Primary Fires	u/a	11	17	54.5%	6	0.15	2		
Deliberate Secondary Fires	u/a	35	43	22.9%	8	0.37	5		
Drug Offences	108	101	85	-15.8%	-16	0.73	7	7	—
Fraud and Forgery	118	176	65	-63.1%	-111	0.56	4	5	—
CSA ASB incidents at Hotspots**	u/a	260	283	8.8%	23	2.45	5		
CSA Criminal Damage incidents at Hotspots**	u/a	107	68	-36.4%	-39	0.59	5		



**Kent
Police**

Perceptions - June Qtr 09

Tonbridge and Malling

CSA	Perceptions of ASB - 7 types	Quarterly Perceptions To Date						Current Quarter		Comparison To Kent (Including Medway)		County Position	
		JunQtr 08	SepQtr 08	+/-	DecQtr 08	+/-	MarQtr 09	+/-	JunQtr 09	+/-	Kent Avg		+/-
	Teenagers hanging around	27.4%	23.7%	-3.7%	21.2%	-2.5%	20.5%	-0.7%	22.4%	1.9%	19.9%	2.5%	11
	Drunk or Rowdy	23.8%	19.1%	-4.7%	16.2%	-2.9%	12.5%	-3.7%	11.7%	-0.8%	13.1%	-1.4%	5
	Vandalism, Graffiti etc	20.6%	15.9%	-4.7%	12.9%	-3.0%	10.1%	-2.8%	9.0%	-1.1%	13.0%	-4.0%	1
	Rubbish/Litter	21.1%	19.6%	-1.5%	16.8%	-2.8%	15.1%	-1.7%	12.9%	-2.2%	16.6%	-3.7%	3
	Noisy Neighbours	7.9%	7.1%	-0.8%	7.1%	0.0%	7.3%	0.2%	5.6%	-1.7%	6.1%	-0.5%	5
	Using/dealing drugs	18.7%	13.0%	-5.7%	10.6%	-2.4%	9.1%	-1.5%	7.8%	-1.3%	11.0%	-3.2%	2
	Abandoned/burnt out cars	5.8%	3.9%	-1.9%	1.7%	-2.2%	1.0%	-0.7%	2.0%	1.0%	2.6%	-0.6%	6
	Overall	17.9%	14.6%	-3.3%	12.4%	-2.3%	10.8%	-1.6%	10.2%	-0.6%	11.8%	-1.6%	6
CSA	Feelings of Safety												
	Daytime alone	98.7%	98.8%	0.1%	98.0%	-0.8%	98.8%	0.8%	99.0%	0.2%	97.6%	1.4%	2
	Dark alone	66.8%	70.7%	3.9%	69.3%	-1.4%	68.6%	-0.7%	67.1%	-1.5%	66.3%	0.8%	7
	Overall	94.7%	95.3%	0.6%	95.6%	0.3%	94.8%	-0.8%	96.6%	1.8%	93.4%	3.2%	2
CSA	Local Concerns												
KA2	Understanding local concerns	u/a	u/a	u/a	u/a	u/a	u/a	u/a	70.4%	u/a	65.2%	u/a	1
	Dealing with local concerns	u/a	u/a	u/a	u/a	u/a	u/a	u/a	81.8%	u/a	74.4%	u/a	1



**Kent
Police**



My contact details:

01732 379111 or

dave.pate@kent.pnn.police.uk

Community Speedwatch

	Jan	Feb	Mar	April	May	Jun	Jul	Aug
Aylesford								
Birling	1 out of 1	1 out of 6	0 out of 6	2 out of 16	0 out of 8	2 out of 12	8 out of 29	
E Malling								
Hadlow								
Mereworth	0 out of 2			2 out of 13	6 out of 22	3 out of 10	12 out of 46	5 out of 30
Offham				0 out of 7				13 out of 23
Ryarsh			4 out of 7		4 out of 7	0 out of 1		
Wateringbury	11 out 51	6 out of 23	25 out of 76	45 out of 77	28 out of 79	66 out of 191	71 out of 168	60 out of 125
W Malling								



**Kent
Police**



Speedwatch coordinator

Pc James Ball

01732 379308

or

speedwatch.westkent.kent.pnn.police.uk